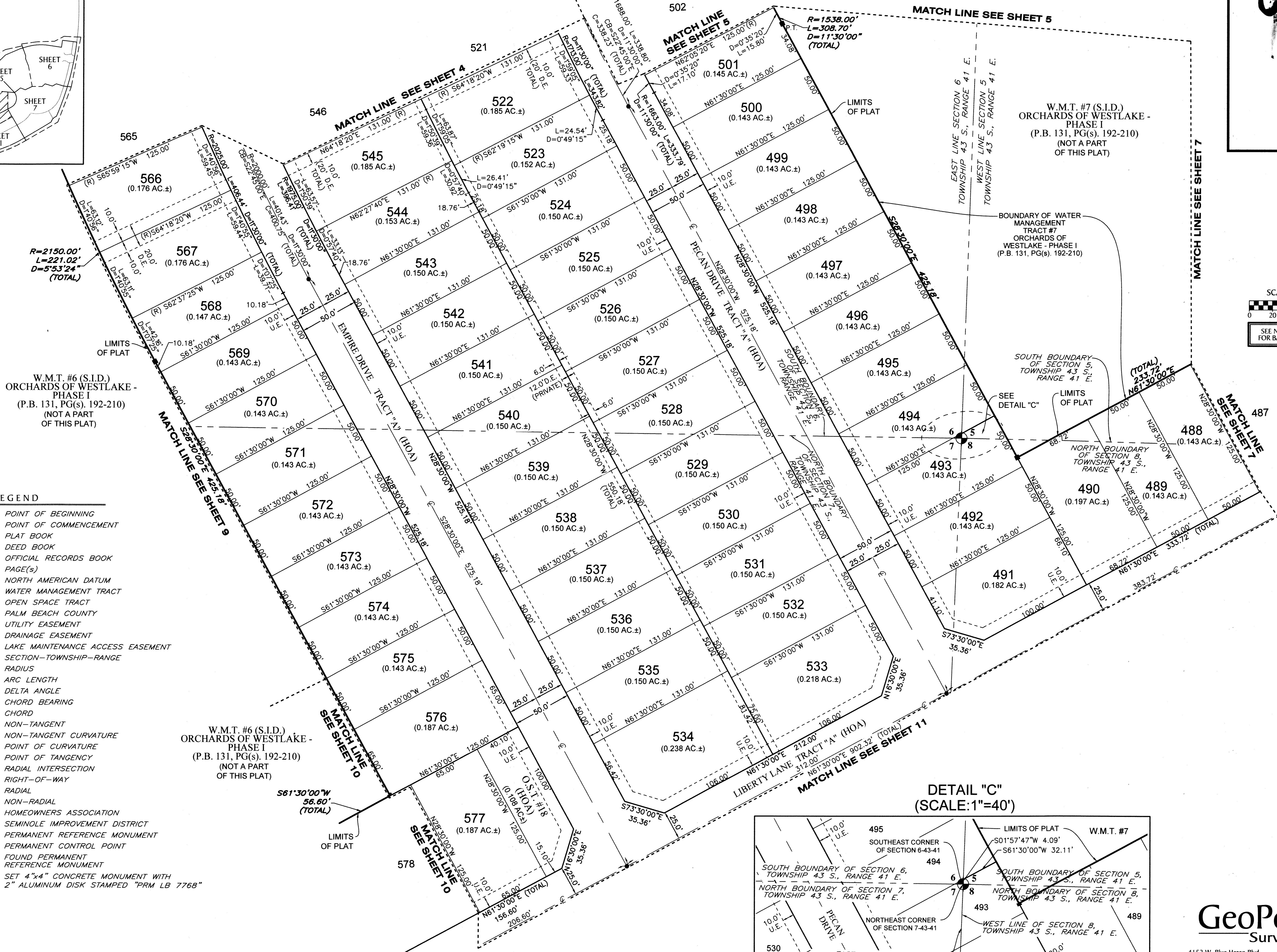
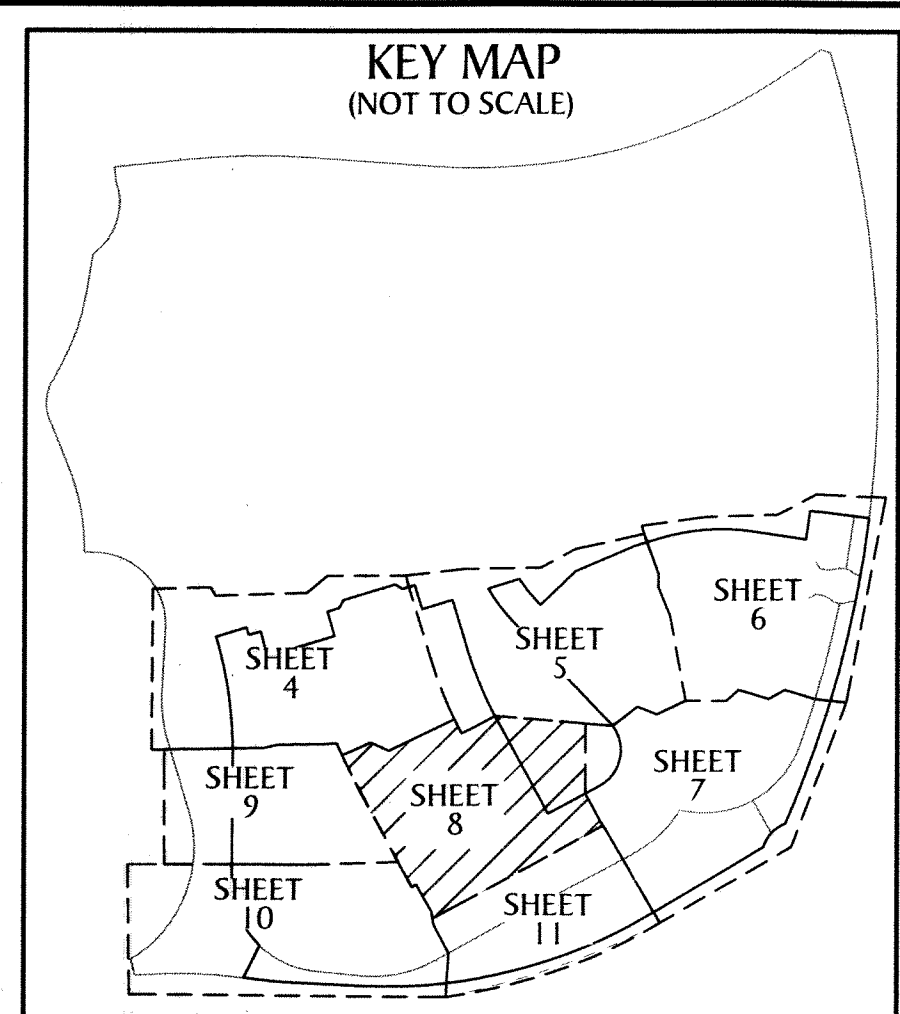


95

ORCHARDS OF WESTLAKE - PHASE II

BEING A REPLAT OF TRACT "S", A PORTION OF OPEN SPACE TRACT #11, OPEN SPACE TRACT #12 AND WATER MANAGEMENT TRACT #9, ORCHARDS OF WESTLAKE - PHASE I, PLAT BOOK 131, PAGES 192 THROUGH 210, INCLUSIVE, OF THE PUBLIC RECORDS OF PALM BEACH COUNTY, FLORIDA, WITHIN SECTIONS 5, 6, 7 AND 8, ALL IN TOWNSHIP 43 SOUTH, RANGE 41 EAST, CITY OF WESTLAKE, PALM BEACH COUNTY, FLORIDA.



- LEGEND**
- P.O.B. ----- POINT OF BEGINNING
 - P.O.C. ----- POINT OF COMMENCEMENT
 - P.B. ----- PLAT BOOK
 - D.B. ----- DEED BOOK
 - O.R./O.R.B. ----- OFFICIAL RECORDS BOOK
 - PG./PG(s) ----- PAGE(S)
 - NAD ----- NORTH AMERICAN DATUM
 - W.M.T. ----- WATER MANAGEMENT TRACT
 - O.S.T. ----- OPEN SPACE TRACT
 - P.B.C. ----- PALM BEACH COUNTY
 - U.E. ----- UTILITY EASEMENT
 - D.E. ----- DRAINAGE EASEMENT
 - L.M.A.E. ----- LAKE MAINTENANCE ACCESS EASEMENT
 - 7-43-41 ----- SECTION-TOWNSHIP-RANGE
 - R ----- RADIUS
 - L ----- ARC LENGTH
 - D ----- DELTA ANGLE
 - CB ----- CHORD BEARING
 - C ----- CHORD
 - N.T. ----- NON-TANGENT
 - N.T.C. ----- NON-TANGENT CURVATURE
 - P.C. ----- POINT OF CURVATURE
 - P.T. ----- POINT OF TANGENCY
 - R.I. ----- RADIAL INTERSECTION
 - R/W ----- RIGHT-OF-WAY
 - (R) ----- RADIAL
 - (NR) ----- NON-RADIAL
 - HOA ----- HOMEOWNERS ASSOCIATION
 - S.I.D. ----- SEMINOLE IMPROVEMENT DISTRICT
 - PRM ----- PERMANENT REFERENCE MONUMENT
 - ----- PERMANENT CONTROL POINT
 - ----- FOUND PERMANENT REFERENCE MONUMENT
 - ----- SET 4"x4" CONCRETE MONUMENT WITH 2" ALUMINUM DISK STAMPED "PRM LB 7768"

W.M.T. #6 (S.I.D.)
ORCHARDS OF WESTLAKE - PHASE I
(P.B. 131, PG(s). 192-210)
(NOT A PART OF THIS PLAT)

W.M.T. #6 (S.I.D.)
ORCHARDS OF WESTLAKE - PHASE I
(P.B. 131, PG(s). 192-210)
(NOT A PART OF THIS PLAT)

W.M.T. #7 (S.I.D.)
ORCHARDS OF WESTLAKE - PHASE I
(P.B. 131, PG(s). 192-210)
(NOT A PART OF THIS PLAT)

